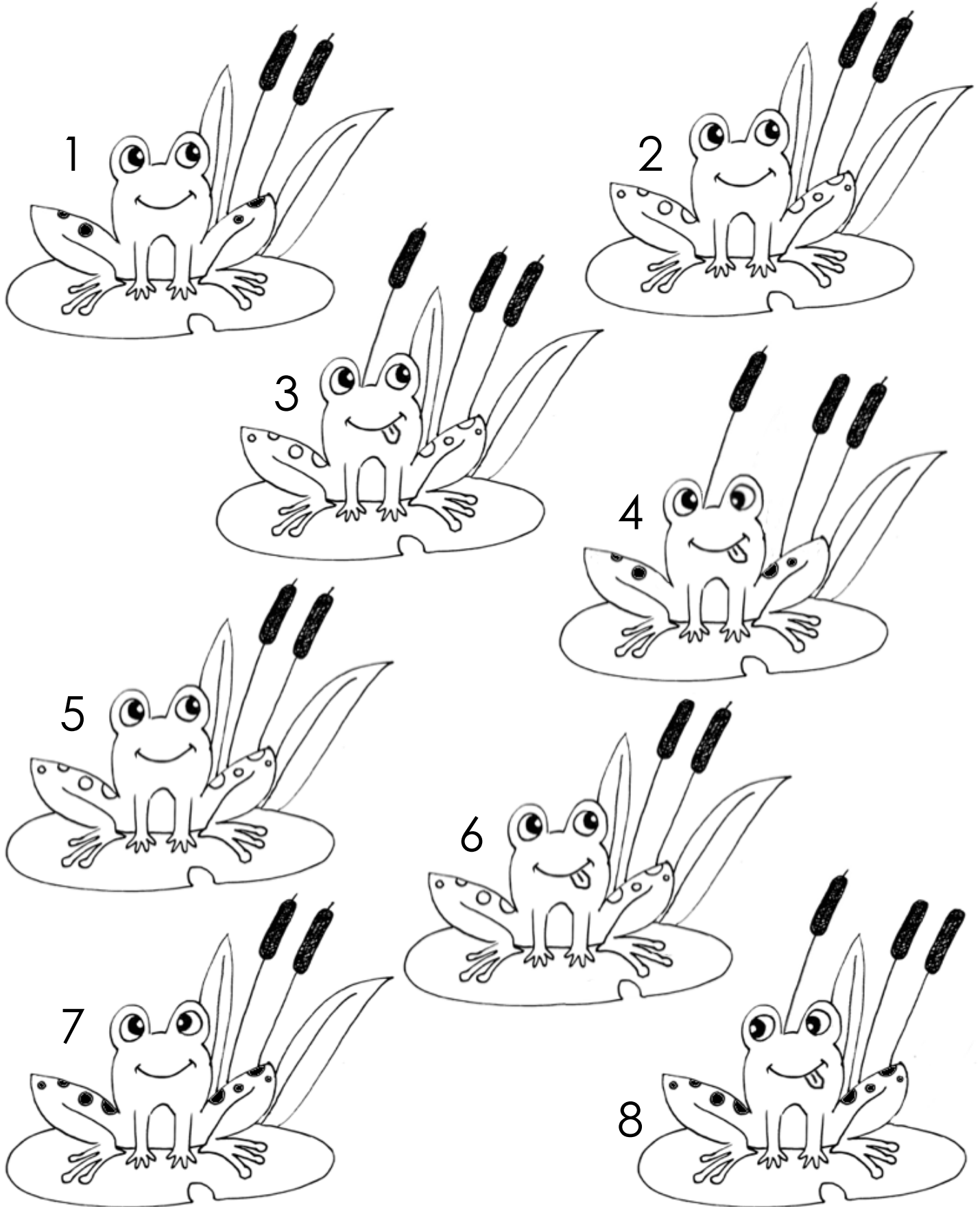
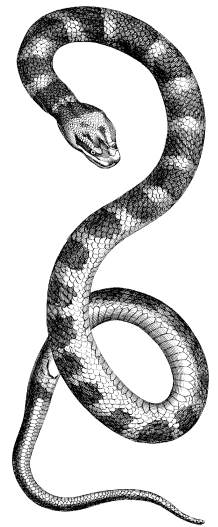
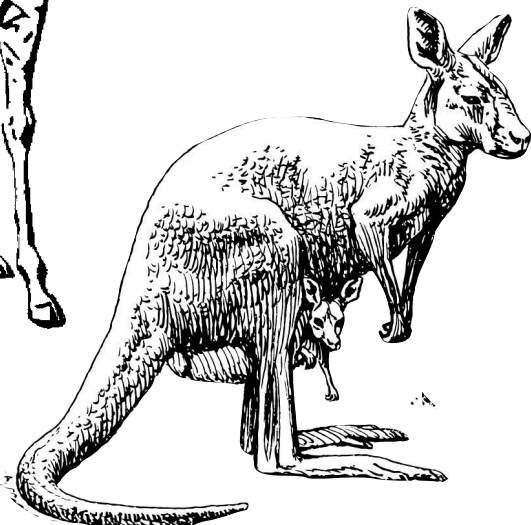
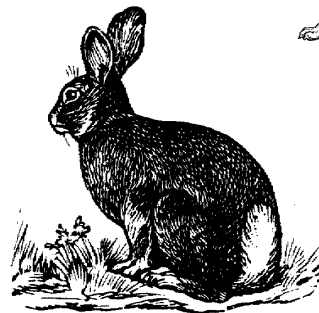
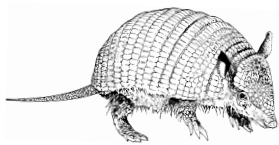
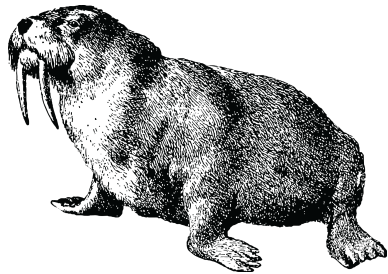
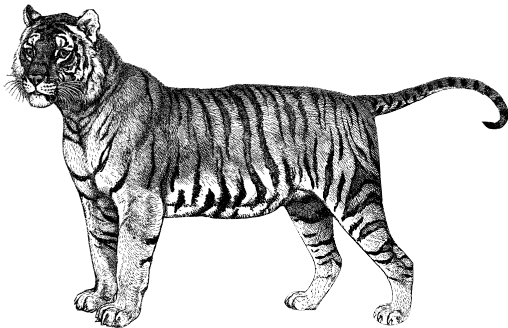
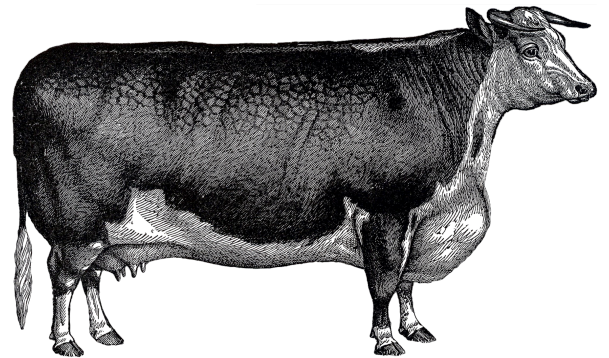
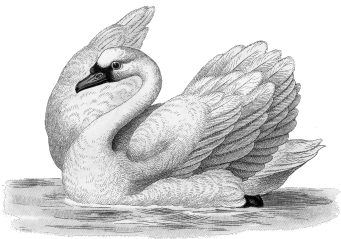


Find the 2 frogs that are exactly alike.

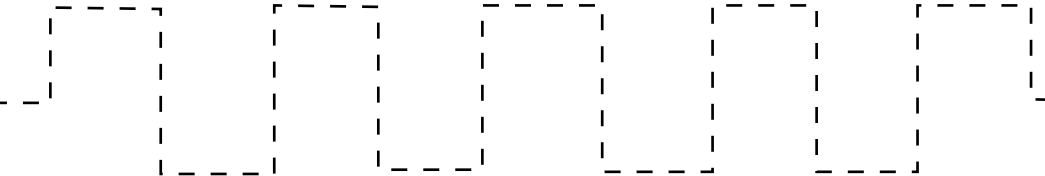
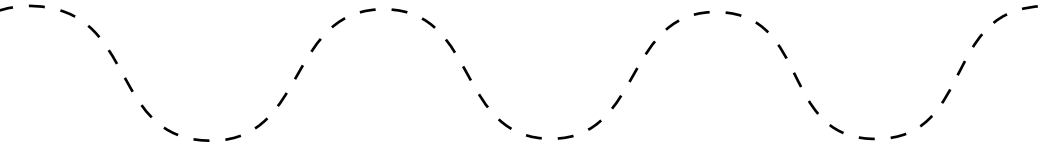
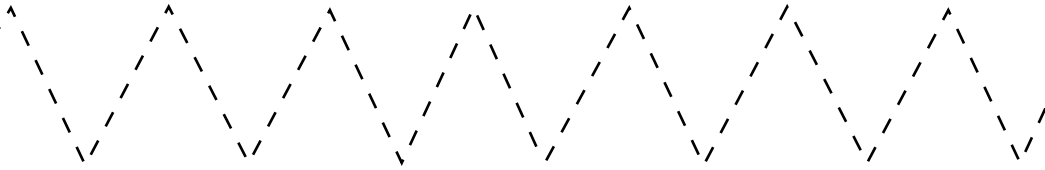
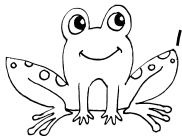
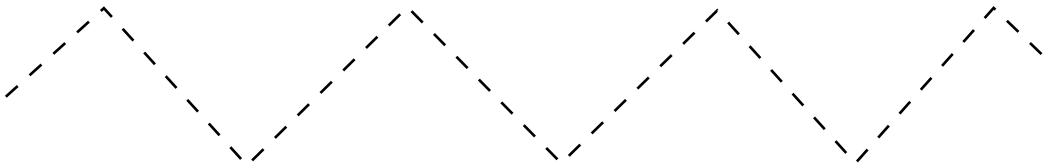
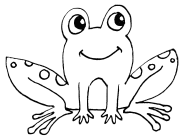
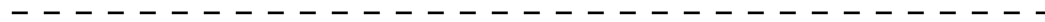
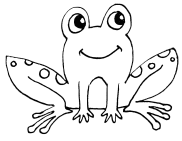


# A frog's strong back legs help it jump.

Circle all the other creatures that get around by leaping, hopping, or jumping.

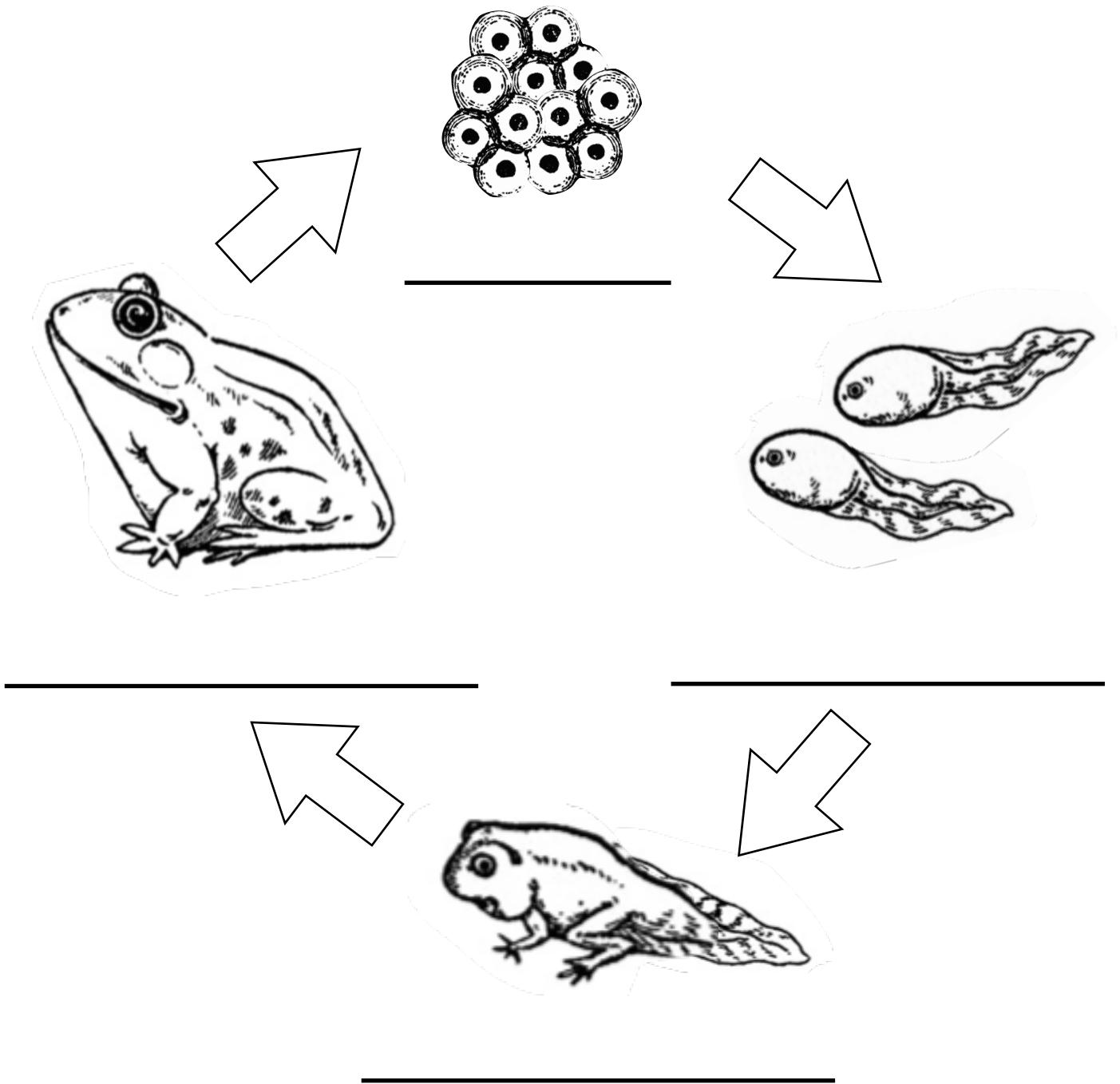


Trace or cut along the dotted lines.



# Life Cycle of Frog

Metamorphosis is the word we use to describe the drastic changes some creatures go through during their life cycle. Use the following terms to label the stages of a frog's metamorphosis: egg, frog, froglet, and tadpole.





Practice your penmanship, then  
draw a fox jumping over this frog:



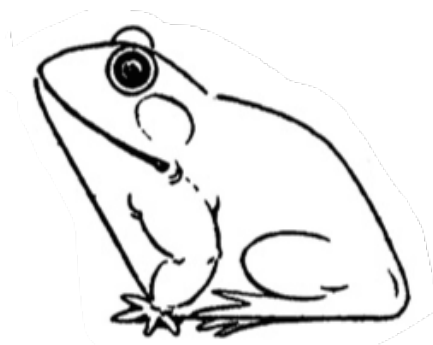
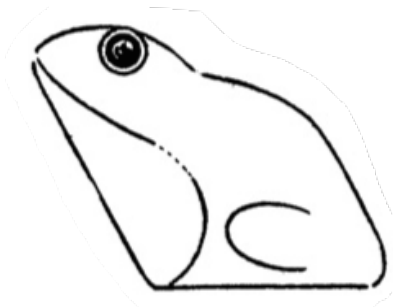
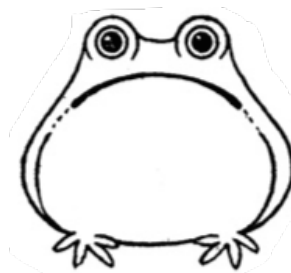
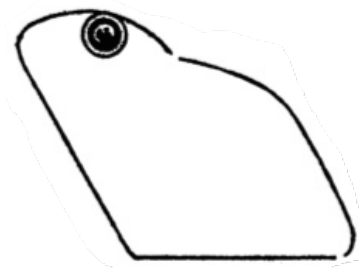
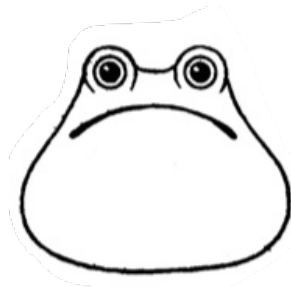
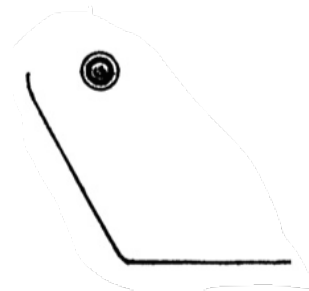
The quick brown  
fox jumped over  
the lazy frog.

Practice your penmanship, then  
draw a fox jumping over this frog:



The quick brown  
fox jumped over the  
lazy frog.

Try your hand at drawing a frog:



# Make a clothespin frog puppet.

1. Print this page on cardstock (green works well, or you can use white and color it before cutting).
2. Cut out the frog head, body, and tongue.
3. Glue the head and body to the upper and lower pieces of one side of a wooden clothespin, with the mouth lined up straight along the edge where the pieces clamp together.
4. Glue base of tongue to the lower piece of the clothespin, on the opposite side as the body.
5. Once the glue has dried, squeeze the ends of the clothespin to watch the frog open his mouth and catch a fly.

